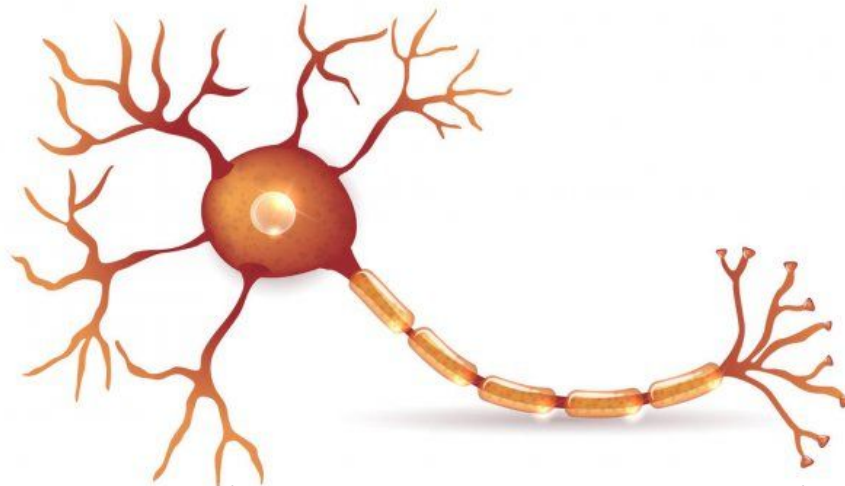


MAKE YOUR OWN MODEL: NEURONS

Materials:

- Clay/ play dough/ model magic/ anything like that type of material
- Yarn/ string/ cooked spaghetti/ pipe cleaners/ anything that can easily bend and is thin
 - Make sure you have 2 different colors of the material you choose
 - If you choose spaghetti, dye the water you cook the spaghetti in 2 different colors
 - If you don't have 2 colors, mix and match the materials; be creative!
- Straw (plastic ones that you can cut)
- Scissors



Steps:

1. Form a ping-pong ball sized ball out of the clay material (this is the soma)
2. Take a smaller piece of clay and lightly press it on top of the ball of clay (this is the nucleus of the neuron)
3. Cut a long piece (about 10 inches) of one yarn color (this is the axon)
4. Place the axon under the clay ball, and press it into the back so that it is "inside" the ball. If you need to, flatten the ball to make this easier.
5. Cut the straw into one inch pieces and string the pieces along the axon (these represent the myelin sheath)
6. Cut the other yarn color into smaller pieces (1-6 in.), and arrange them in a branching formation that stem from the soma (these are the dendrites)
 - a. Get creative with your dendrite branches; remember: neurons look unique because of their different dendrite arrays!!
7. When you're satisfied with your neuron model, take a picture of it and send it to elliapan8@gmail.com... maybe your neuron will be featured on our website!!!